

V2



## *Installation manual*



## *BMW E90 7inch Android*

*Are you ready to install our unit?*

*Let's go >>>*

# 5 steps to install

**STEP 01** Double check if has any missing before installation.

**STEP 02** Check  
1) Do the screen is broken ?  
2) Do the accessories have missing ?

**STEP 03** Test your unit before installing into your car  
(Connect the power cable to your car)

**STEP 04** Do the full installation.

**STEP 05** Test the head unit functions.

**STEP 01** Double check if has any missing before installation.

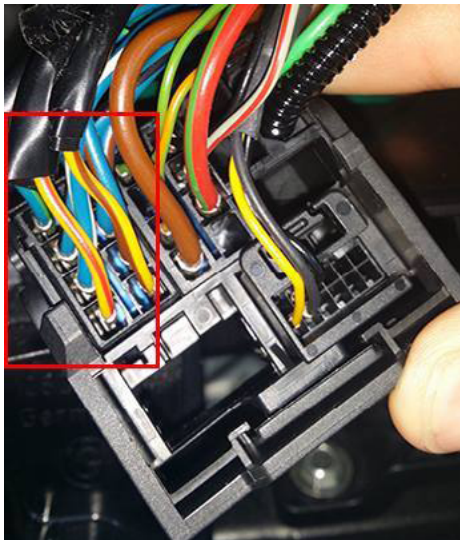




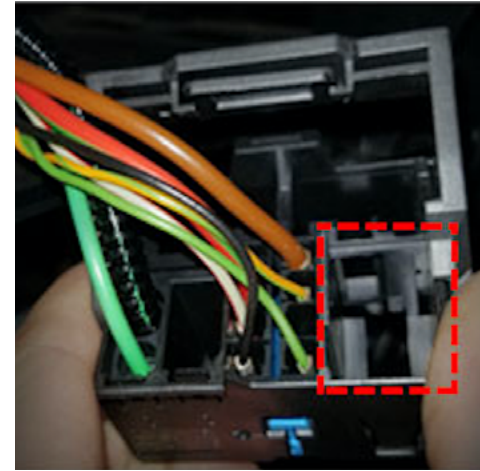
Your car has **iDrive system** which is equipped with a LCD screen, this case your car **won't be suitable** for our E90 head unit.



If your car radio plug has built-in the **fiber optics**, a **SOS prompt may be shown** on the dashboard after installing our E90 head unit. This alarm will not affect the radio usage.



If your car radio plug **has fiber optic input with 8 speaker cables**, it means your car doesn't have the fiber optic amplifier, then it won't need a decoder box in the installation.



Contrastly, If your car radio plug **has fiber optic input without 8 speaker cables**, it means your car has the fiber optic amplifier, then it will need to separately purchase a decoder box **(Not included)** for the installation.

### Decoder box image



Installation video for connecting decoder box



**Accessories**



- 1. Mounting bracket \* 1
- 2. Power cable \* 1
- 3. GPS antenna \*1
- 4. Wifi antenna \*1
- 5. USB adapter cable \*1
- 6. USB adapter cable \*1
- 7. Radio antenna connector \*1
- 8. Canbus \*1
- 9. RCA cable \*1
- 10. External microphone \*1
- 11. AC mounting bracket \*2
- 12. Disassembly tool \*1
- 13. AC mounting bracket accessories \*1
- 14. Long screw \*2 + Short screw \*4
- 15. Antenna adapter \*1
- 16. 15A fuse \*1
- 17. 3M adhesive \*1

**STEP 03** Test your unit before installing into your car  
(Connect the power cable to your car)

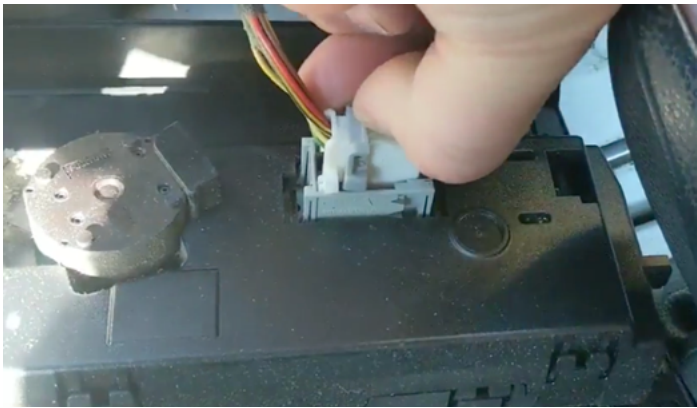
1. Double check the size and shape of the center console panel.



2. Pry the Air conditioner console from edge with the disassembly tool (12)



3. Then unplug all of the cables connected to the backside of air conditioner console



Now you can take out the power cable to connect the head unit and then try to turn it on. If this part is no problem, you can do the remain steps.

**STEP**  
**04** Do the full installation.

4. Unscrew the bolts at the left and right side under the old factory radio.

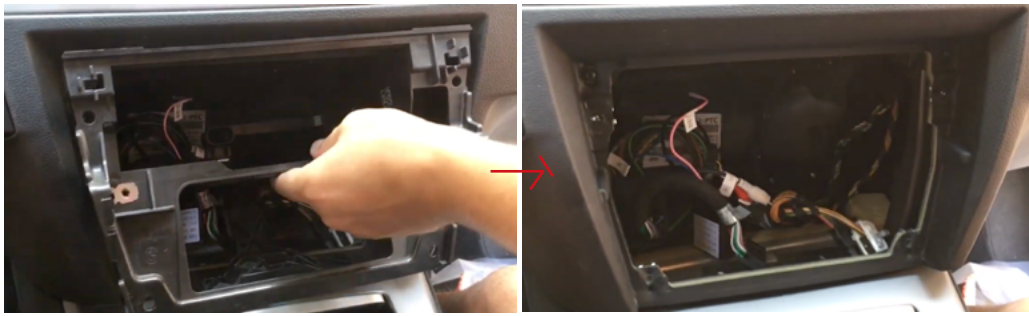


5. Pull out the old factory radio and unplug all of the cables connected again.

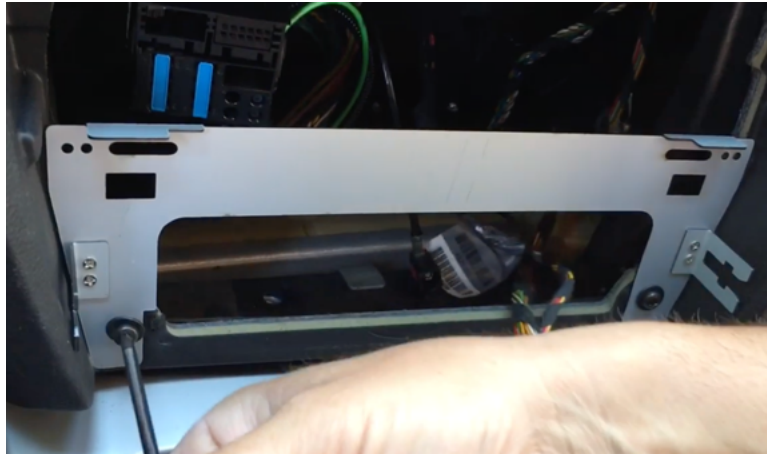
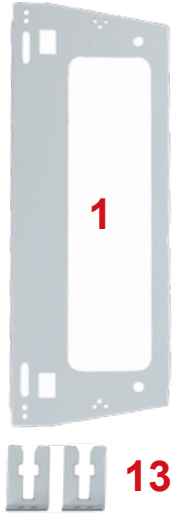


6. Now go to remove the old bracket, unscrew the bolts and then pull the whole bracket out.





7. Install the new bracket (1) and two accessories (13) on it.



8. Then install the mounting bracket (11) on the air conditioner console.

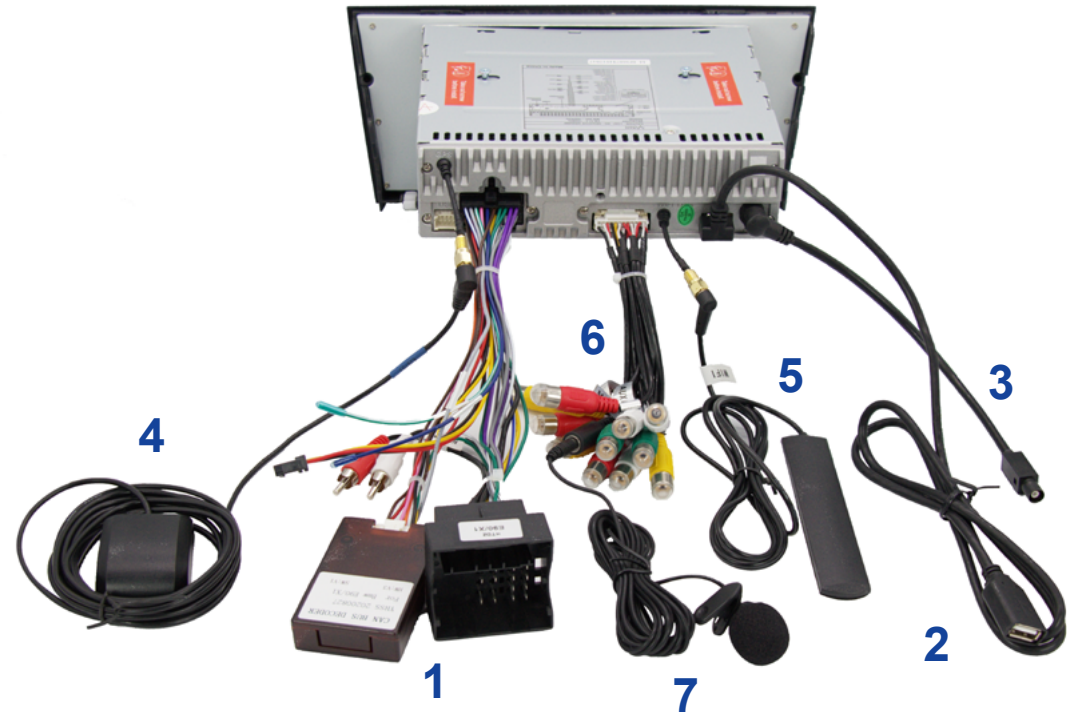
- If the AC is auto, please use this part.



- If the AC is manual, please use this part.



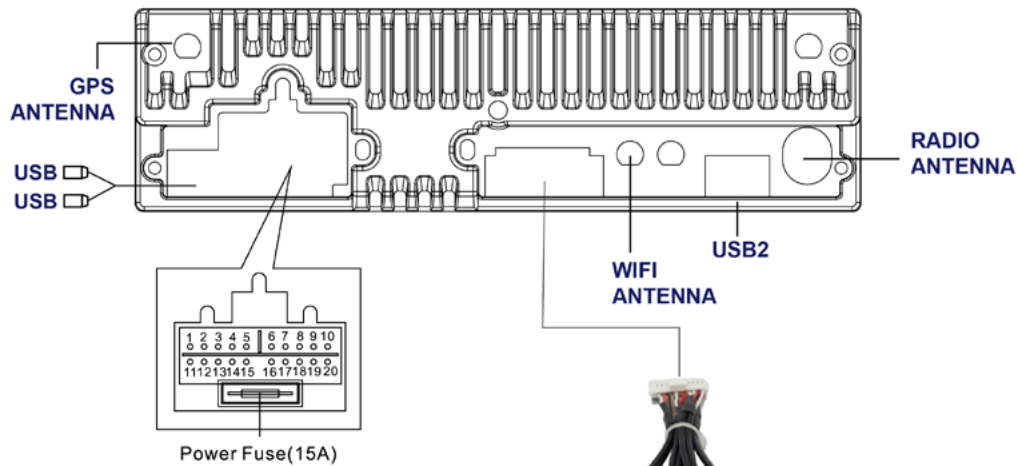
9. Connect those wires provided in the package like (1) Power cable with canbus, (2) USB cable, (3) Radio antenna adapter cable, (4) GPS antenna, (5) Wi-fi antenna and (6) RCA cable and (7) External microphone as shown.



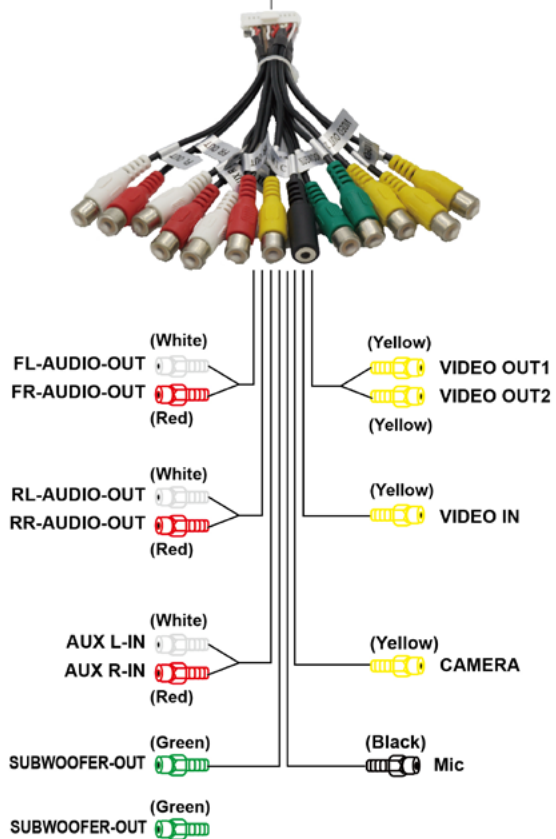
**Remark:**

The USB cable can support USB flash drive, MP3 player and to charge your mobile phone.

# Wiring diagram



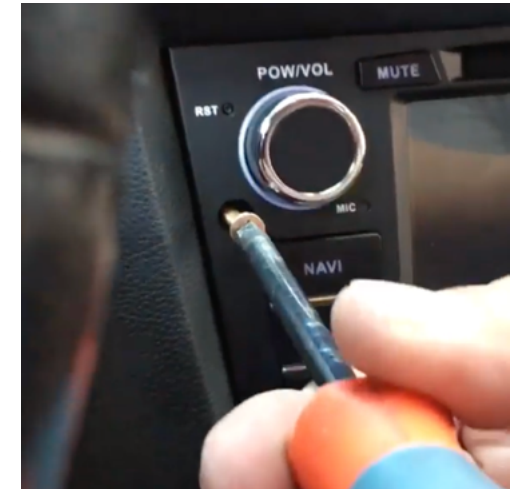
1. Power amplifier control
2. Steering wheel control 2
3. Steering wheel control 1
4. Brake wire
5. Auto antenna power
6. Rearview control wire
7. Rear left speaker-
8. Rear left speaker+
9. Rear right speaker-
10. Rear right speaker+
11. CANBUS TX (IR)
12. CANBUS RX (GND)
13. ILLUMI
14. Accessory
15. Ground
16. Power+12V
17. Front left speaker-
18. Front left speaker+
19. Front right speaker-
20. Front right speaker+



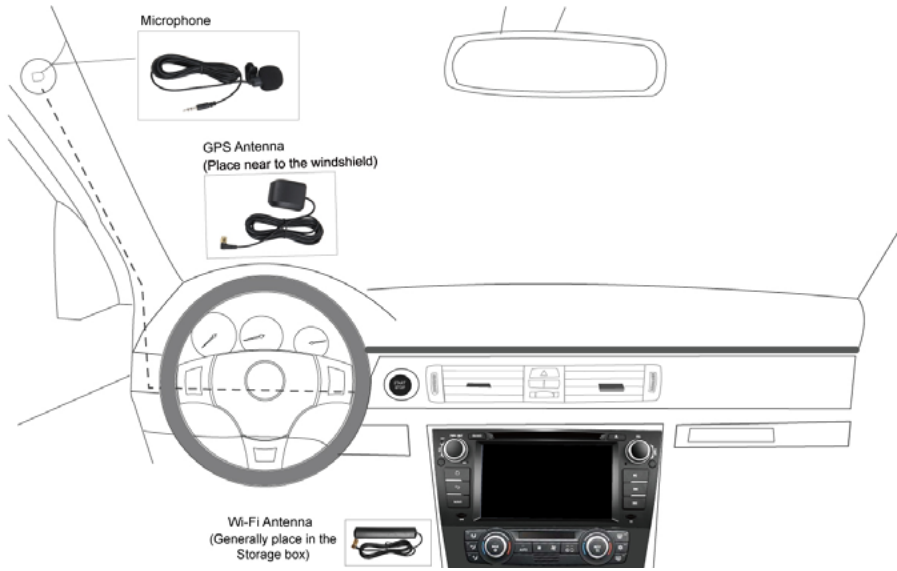
10. After that, you can combine the air conditioner console and new radio together.



11. Finally, push the new radio into the middle console and then screw the bolts to consolidate it.

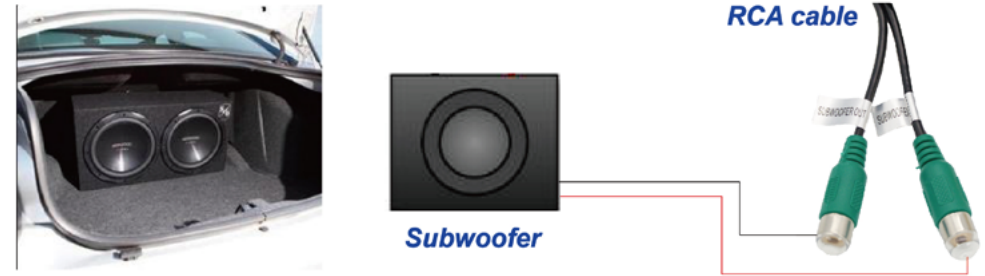


15. Plug the head unit into the center console, then place the GPS antenna and microphone as shown. The wires are hidden in the side of pillar trim and led to the head unit.

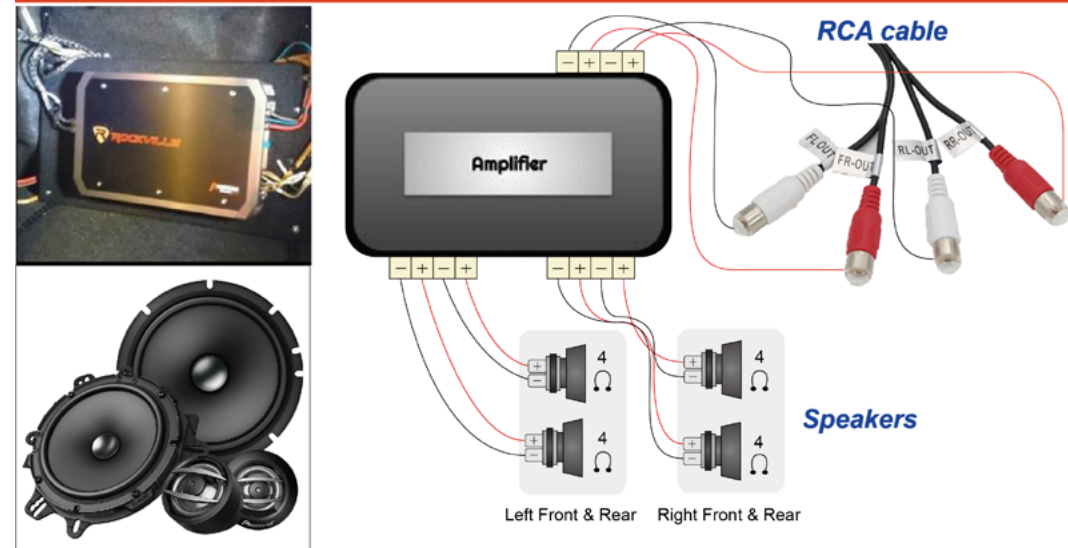


## Wire connection for the amplifier, the subwoofer and the headset monitors

Case 1: Subwoofer connects to the head unit



Case 2: The external amp and the speakers are connected to the head unit.

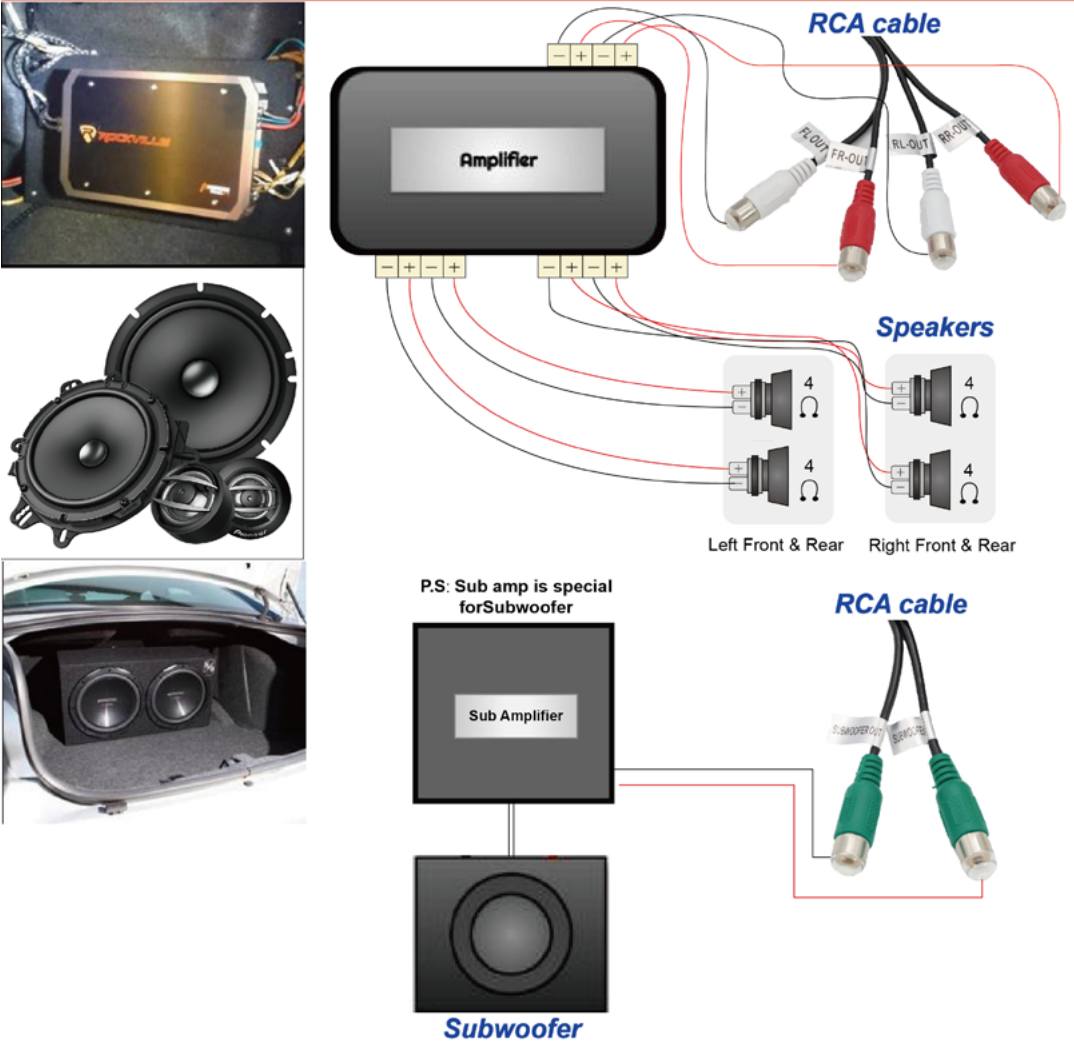


**STEP 05** Test the head unit functions.  
(FM, SD, USB, Bluetooth, reversing, handbrake, headlight, steering wheel control and etc)

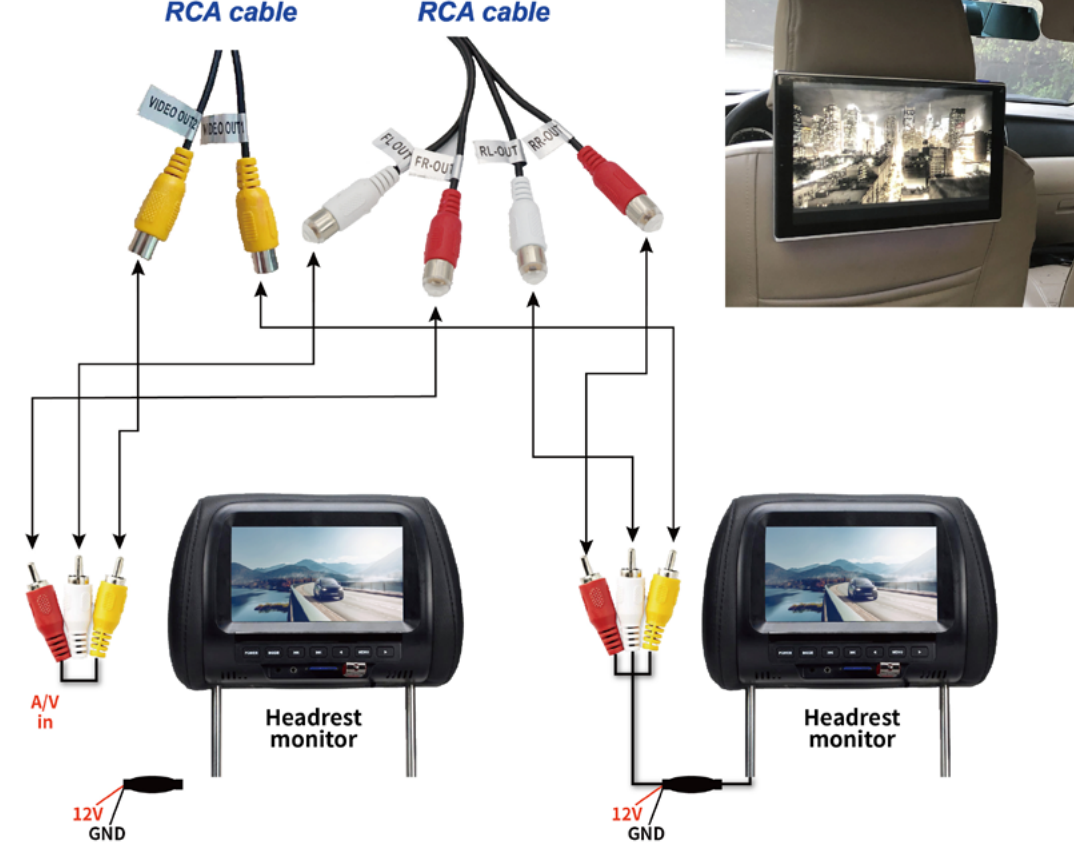




Case 3: The external amp + the speakers and the subwoofer both with independent amp are separately connected to the head unit.



Case 4: The headrests monitors are connected to the head unit



Except for connecting the amplifier, the slot of FL, FR, RL, RR also are used for connecting the headrest monitors.

## Optional : Install a rear camera

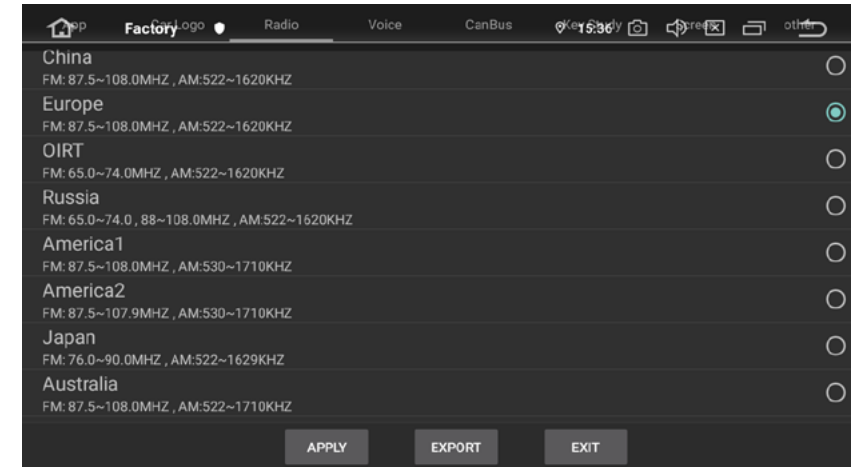
Below is our rear camera. This will be a reference to teach you how to connect a rear camera to our head unit.



## System Initial setup

### 1 Set radio location

The default radio country in the unit is Europe, if you are from other country, you need to access the "factory mode (PW: 126) > Radio" to adjust the country.



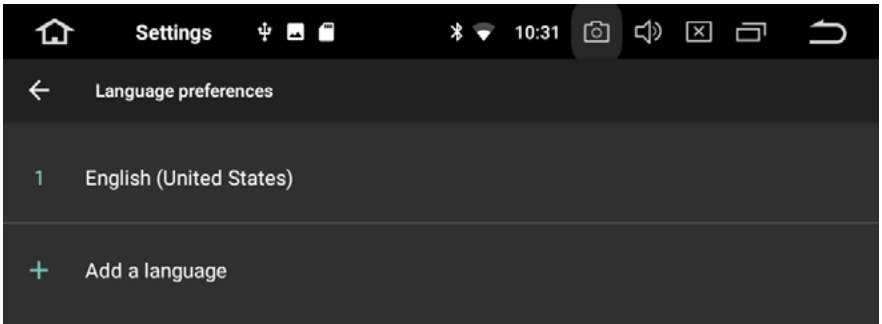
### 2 Set RDS

The Radio has RDS function but this function is only for Europe, if the clients from other countries use it, it will affect the radio receive, so please close it.



### 3 Set the unit language

Please go to setting > Languages & input, then you can add the desirable language you need.



### About after sales service

Q: Do my head unit has one year maintenance?

A: Definitely yes, you will have our commitment after you purchase.

(The maintainence period will base on the date you make the order)