

V2



Installation manual



Universal 10.1" 90 Rotated Touchscreen Android (1058)

Are you ready to install our unit?

Let's go >>>

4 steps to install

STEP 01

Check

- 1) Do the screen is broken ?
- 2) Do the accessories have missing ?

STEP 02

Test your unit before a full installation.
(Connect the power cable to your car)

STEP 03

Do the full installation.

STEP 04

Test the head unit functions.

Accessories



- | | |
|---------------------------|--------------------------|
| 1. Power cable * 1 | 2. GPS antenna * 1 |
| 3. USB adapter cable *1 | 4. USB adapter cable *1 |
| 5. External microphone *1 | 6. Wi-Fi antenna *1 |
| 7. Disassembly tool *1 | 8. Short screw *6 |
| 9. 15A fuse *1 | 10. Mounting brackets *2 |

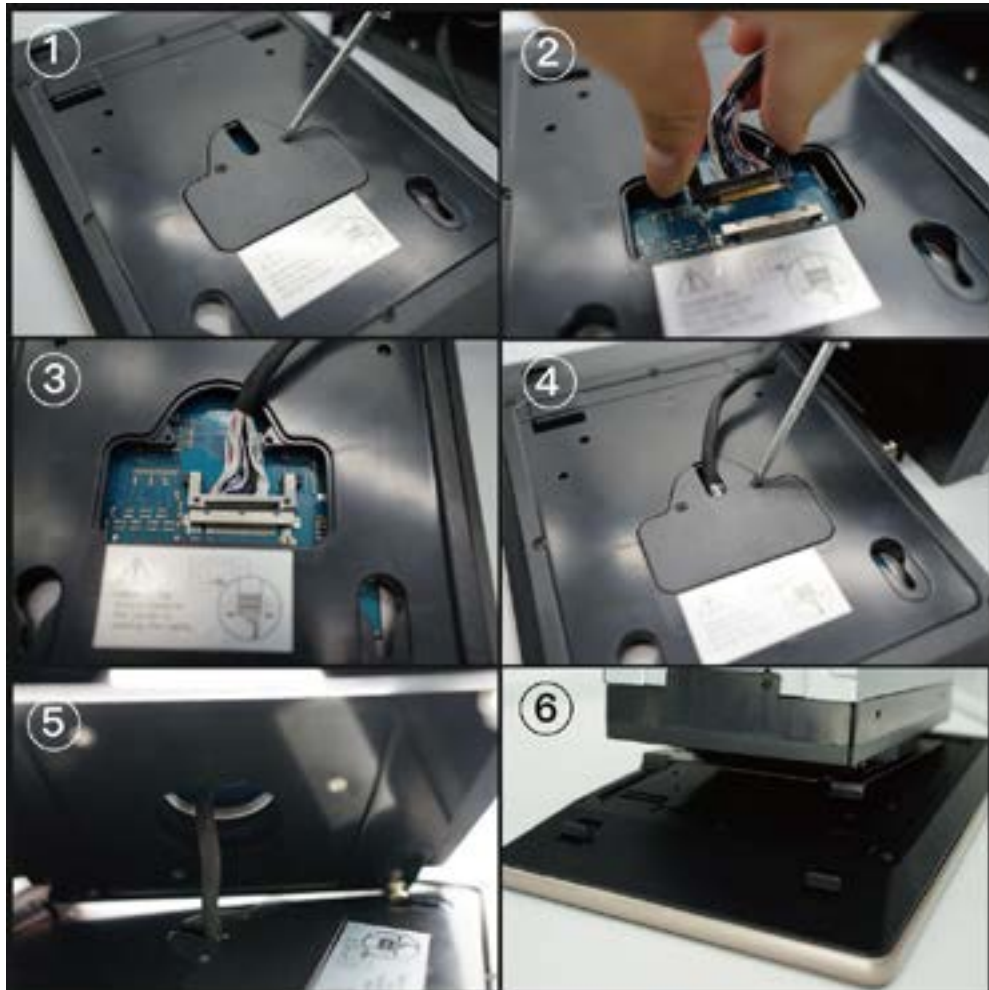
STEP 02 Test your unit before a full installation.

(Connect the power cable to your car)

1. Install the screen

- Unscrew the bolts of the screen backside.
- Plug the cable of unit to the screen backside like (2-3).
- Screw the bolts back and install the screen to unit like(5-6).

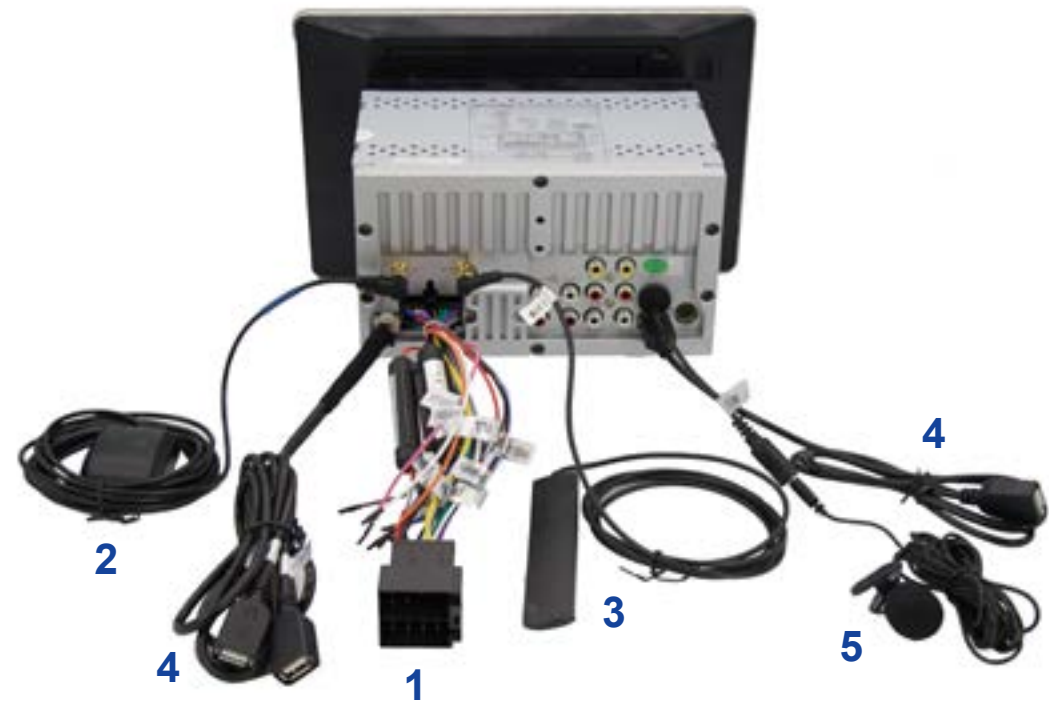
(Please keep the car engine turn off when you do this step)



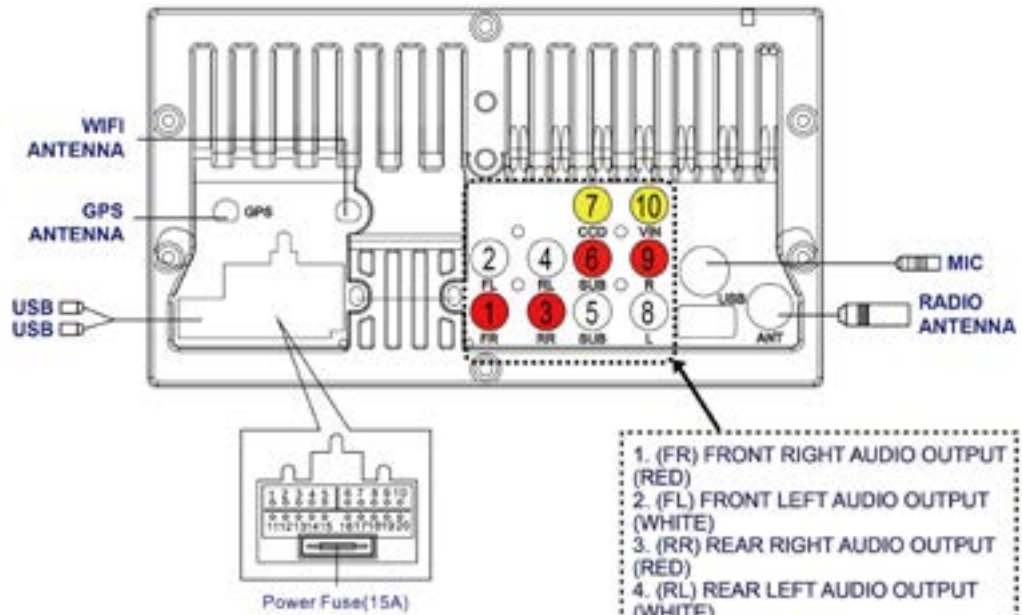
Now you can take out the power cable to connect the head unit and then try to turn it on. If this part is no problem, you can do the remain steps.

STEP 03 Do the full installation.

- ## 2. Connect those wires provided in the package like (1) Power cable, (2) GPS antenna, (3) Wi-fi antenna, (4) USB cable and (5) External microphone as shown.



Wiring diagram

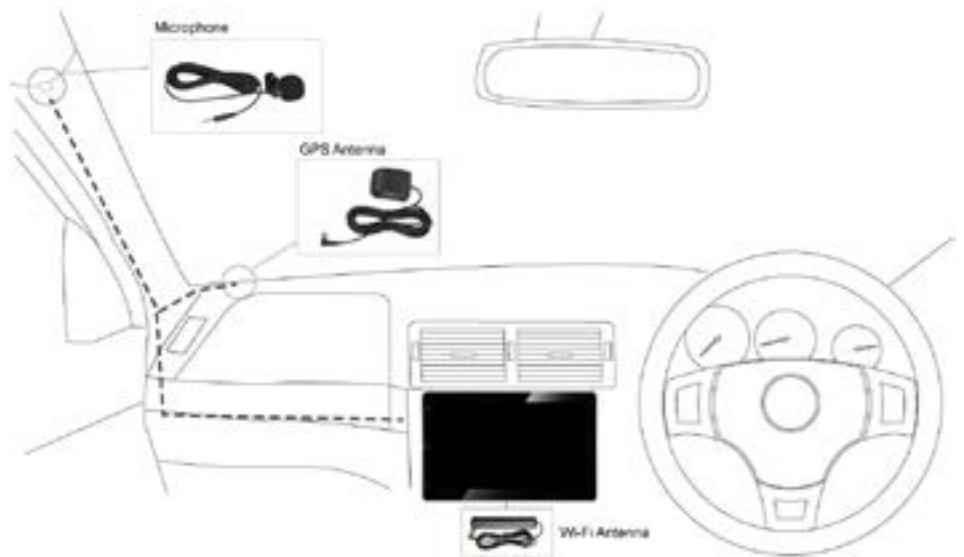


- 1. Power amplifier control
- 2. Steering wheel control 2
- 3. Steering wheel control 1
- 4. Brake wire
- 5. Auto antenna power
- 6. Rearview control wire
- 7. Rear left speaker-
- 8. Rear left speaker+
- 9. Rear right speaker-
- 10. Rear right speaker+
- 11.
- 12. Steering wheel Control GND
- 13. ILLUMI
- 14. Accessory
- 15. Ground
- 16. Power+12V
- 17. Front left speaker-
- 18. Front left speaker+
- 19. Front right speaker-
- 20. Front right speaker+

- 1. (FR) FRONT RIGHT AUDIO OUTPUT (RED)
- 2. (FL) FRONT LEFT AUDIO OUTPUT (WHITE)
- 3. (RR) REAR RIGHT AUDIO OUTPUT (RED)
- 4. (RL) REAR LEFT AUDIO OUTPUT (WHITE)
- 5. SUB OUT (WHITE)
- 6. SUB OUT (RED)
- 7. REAR CAMERA INPUT (YELLOW)
- 8. (L) CH INPUT (WHITE)
- 9. (R) CH INPUT (RED)
- 10. VIDEO IN (YELLOW)

Remark:
This head unit doesn't have video output slot. It can't synchronize the image of head unit to the screen of backset.

3. Plug the head unit into the center console, then place the GPS antenna and microphone as shown. The wires are hidden in the side of pillar trim and led to the head unit.

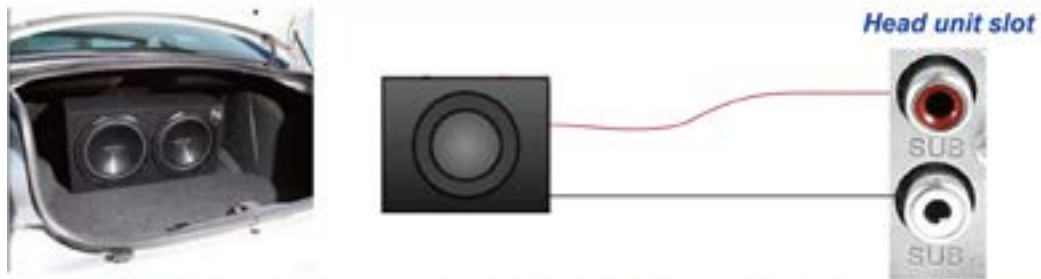


STEP 04 Test the head unit functions. (FM, SD, USB, Bluetooth, reversing, handbrake, headlight and etc)

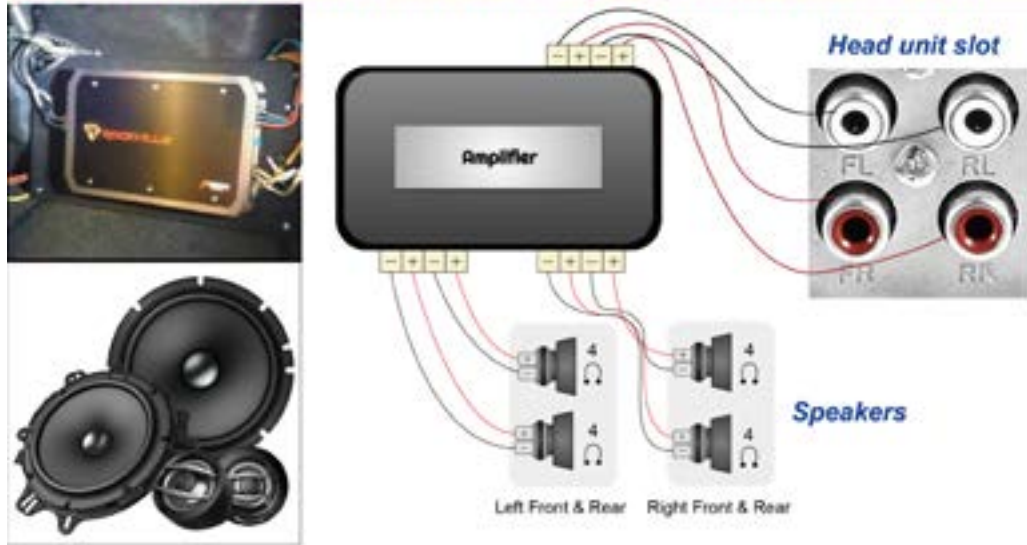


Wire connection for the amplifier and the subwoofer

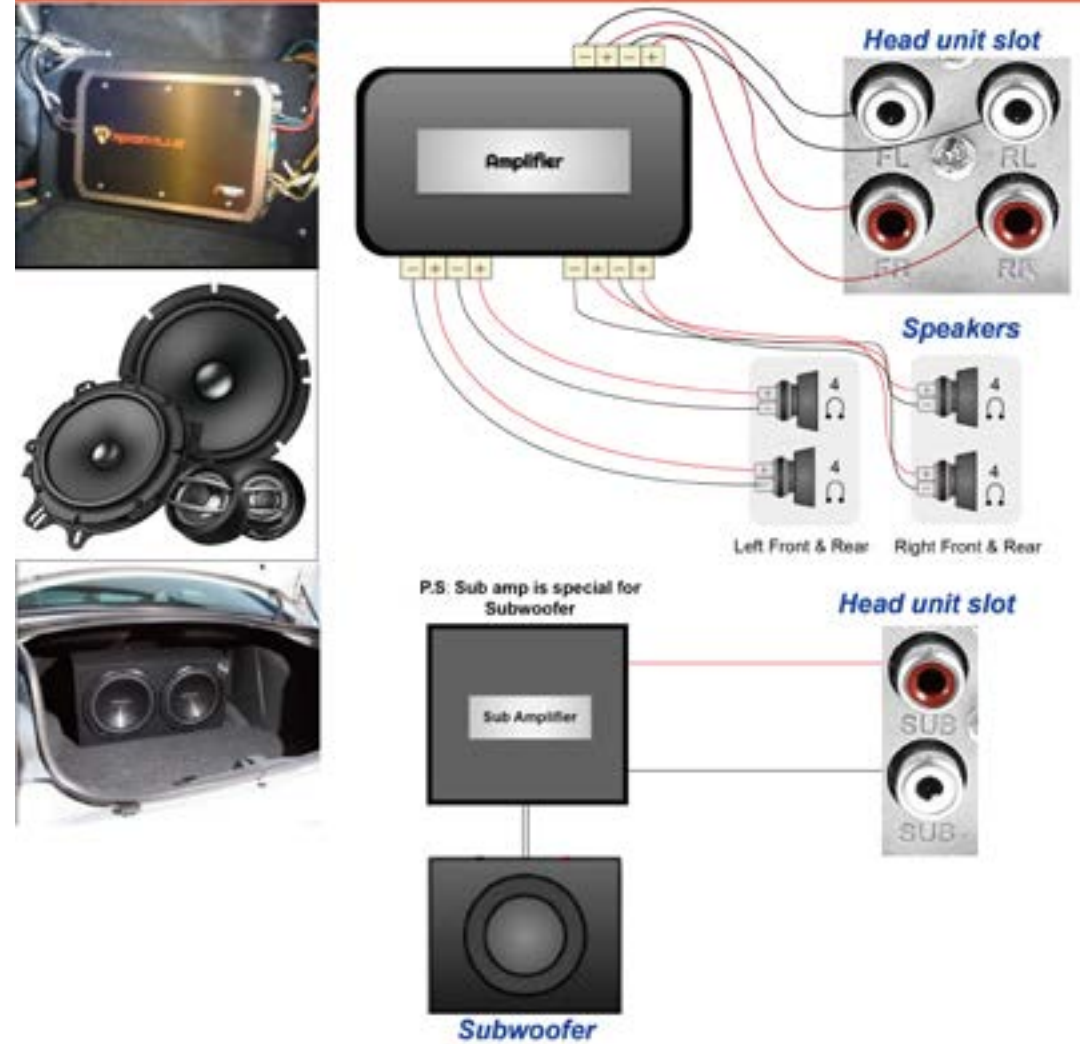
Case 1: The subwoofer connects to the head unit



Case 2: The 2/4 speakers with an amplifier are connected to the head unit.



Case 3: The 2/4 speakers with an amplifier and the subwoofer with an amplifier are separately connected to the head unit.

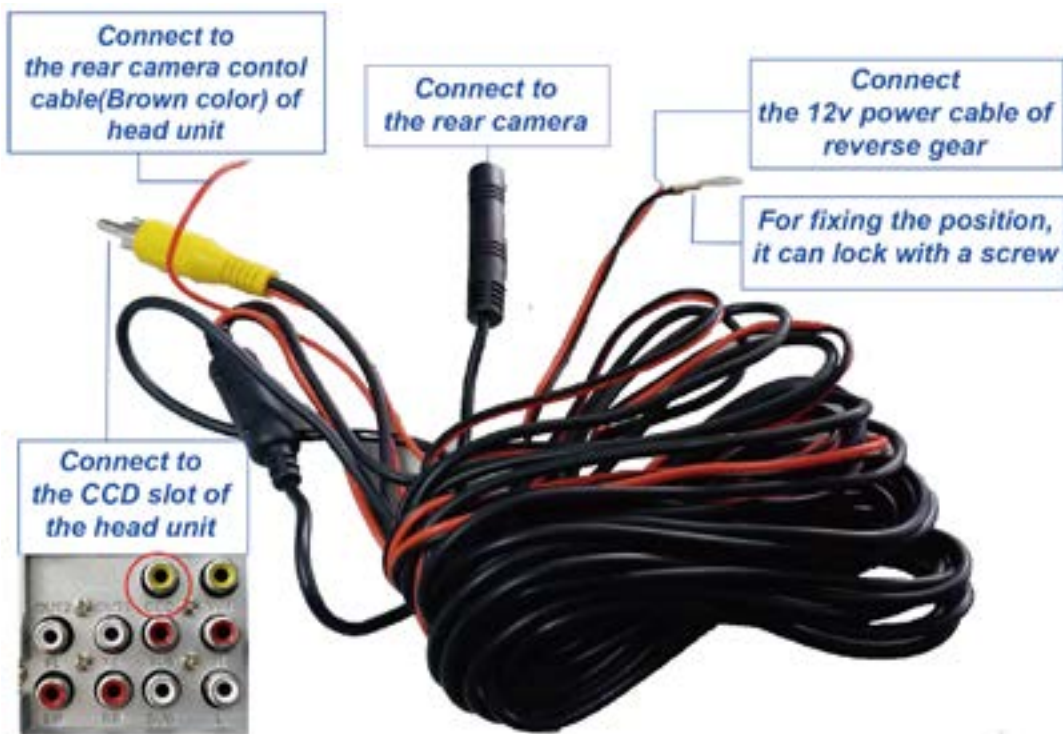


Optional : Install a rear camera

Our main unit only syncs the rear camera but not the front camera.



Cable connection

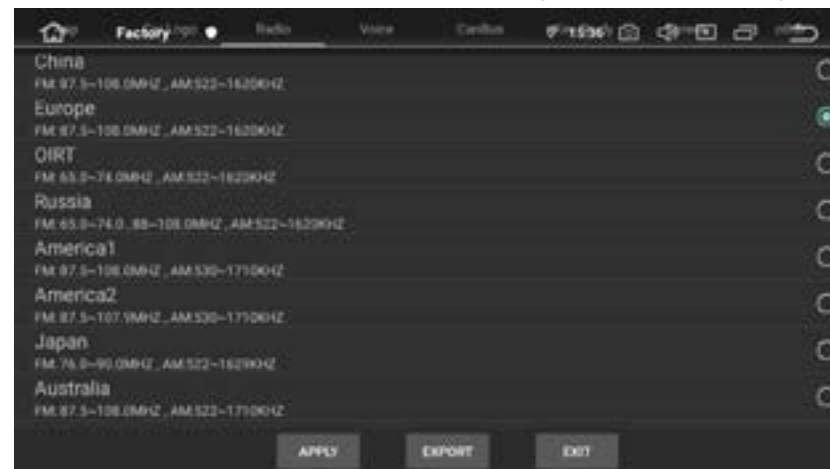


The ASIN of this rear camera has placed in the listing.

System Initial setup

1 Set radio location

The default radio country in the unit is Europe, if you are from other country, you need to access the "factory mode (PW: 126) > Radio" to adjust the country.



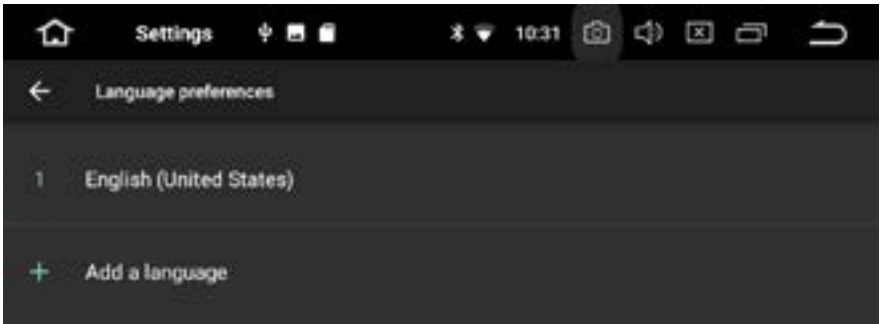
2 Set RDS

The Radio has RDS function but this function is only for Europe, if the clients from other countries use it, it will affect the radio reception, so please close it.



3 Set the unit language

Please go to setting > Languages & input, then you can add the desirable language you need.



About after sales service

Q: Do my head unit has one year maintenance?

A: Definitely yes, you will have our commitment after you purchase.

(The maintenance period will base on the date you make the order)