



Installation manual



Universal 10.1inch Deckless Android (1038)

Are you ready to install our unit?

Let's go >>>

4 steps to install

STEP 01

Check

- 1) Do the screen is broken ?
- 2) Do the accessories have missing ?

STEP 02

Test your unit before a full installation.

(Connect the power cable to your car)

STEP 03

Do the full installation.

STEP 04

Test the head unit functions.

Accessories



1. Power cable * 1

3. Wi-Fi antenna *1

5. 15A fuse *1

7. GPS antenna *1

2. USB adapter cable * 2

4. Disassembly tool *1

6. Disassembly keys *2

8. External microphone *1

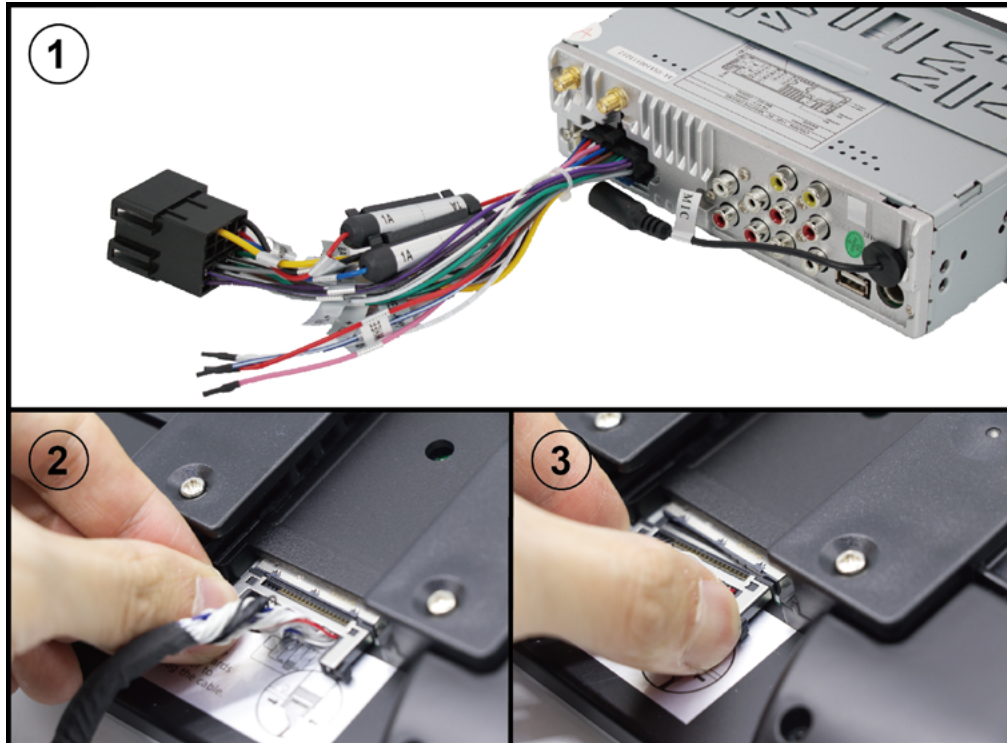
STEP 02 Test your unit before a full installation.

(Connect the power cable to your car)

After you remove the factory radio, you can take out the power cable to connect the head unit and casually connect the screen cable to the screen

How to install the screen?

1. Connect the factory power cable to our head unit.
- 2-3. Hold the clip of cable and lightly put one side to connect the plug of unit and then completely connect.
4. Simply place the screen on the unit.



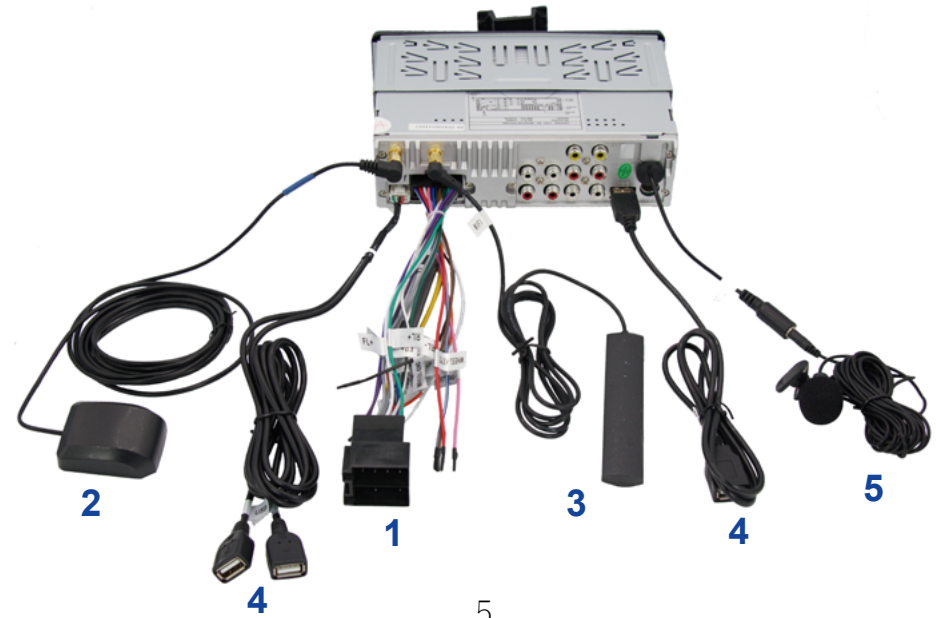
4



If the unit has no problem, you can move the remain steps.

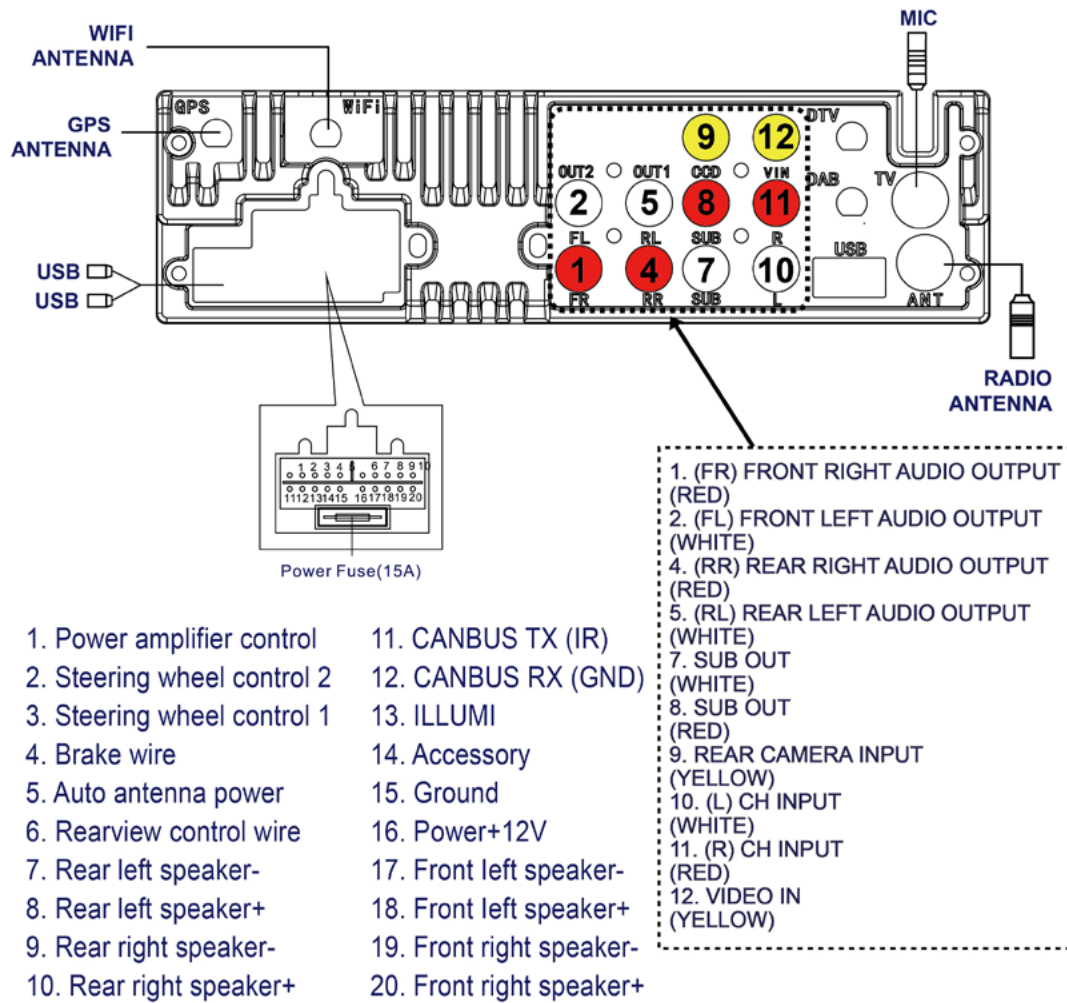
STEP 03 Do the full installation.

1. Connect those wires provided in the package like (1) Power cable, (2) GPS antenna, (3) Wi-fi antenna, (4) USB cable and (5) External microphone as shown.



5

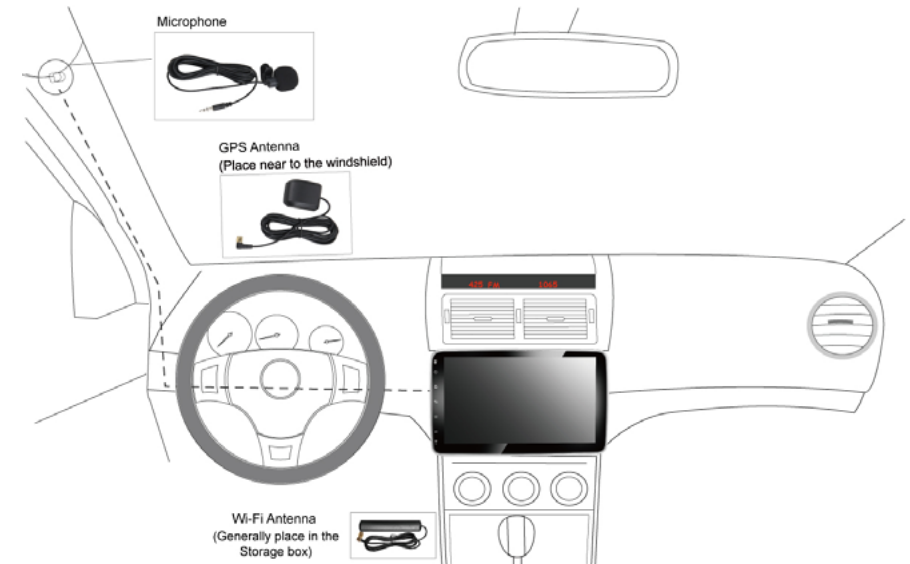
Wiring diagram



Remark:

This head unit doesn't have video output slot. It can't synchronize the image of head unit to the screen of backset.

2. Install the screen again and place the GPS antenna and microphone as shown. The wires are hidden in the side of pillar trim and led to the head unit.



STEP 04 Test the head unit functions.
(FM, SD, USB, Bluetooth, reversing, handbrake, headlight and etc)

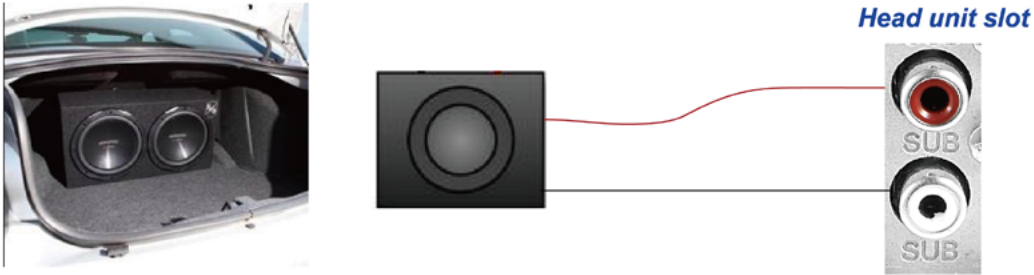


About the screen rotated features

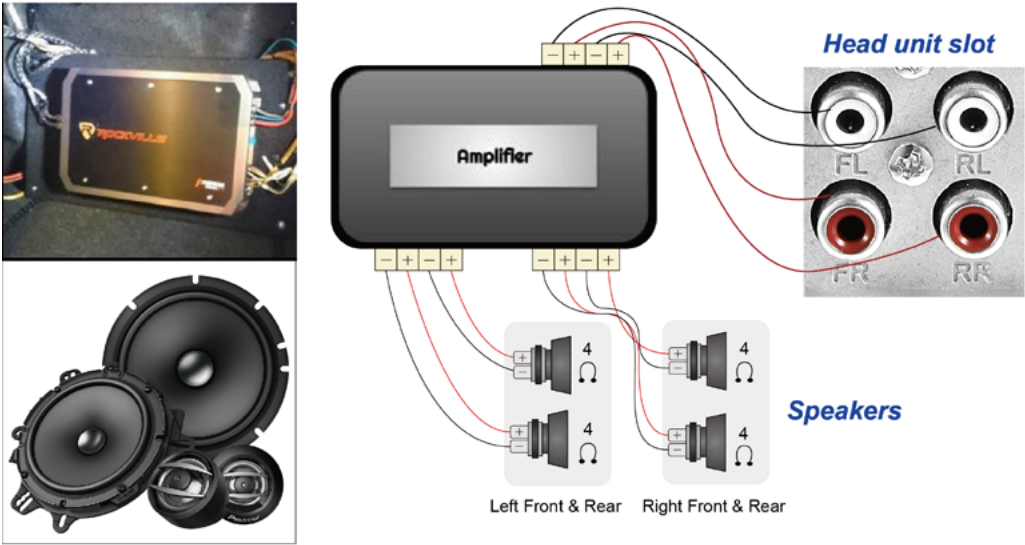


Wire connection for the amplifier and the subwoofer

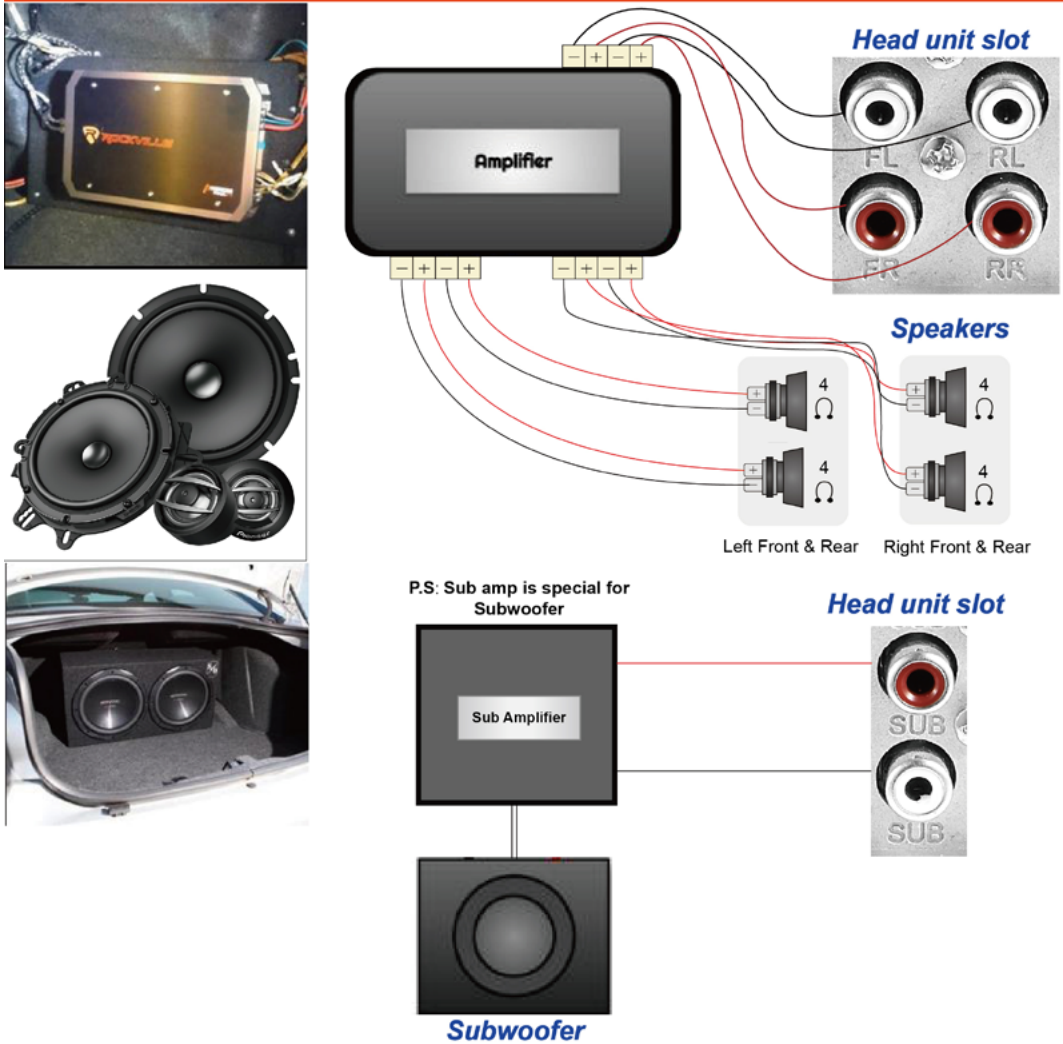
Case 1: The subwoofer connects to the head unit



Case 2: The 2/4 speakers with an amplifier are connected to the head unit.



Case 3: The 2/4 speakers with an amplifier and the subwoofer with an amplifier are separately connected to the head unit.



Optional : Install a rear camera

Below is our rear camera. This will be a reference to teach you how to connect a rear camera to our head unit.



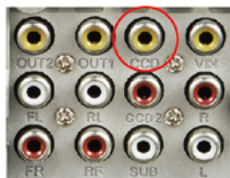
Connect to the rear camera control cable (Brown color) of head unit

Connect to the rear camera

Connect the 12v power cable of reverse gear

For fixing the position, it can lock with a screw

Connect to the CCD slot of the head unit

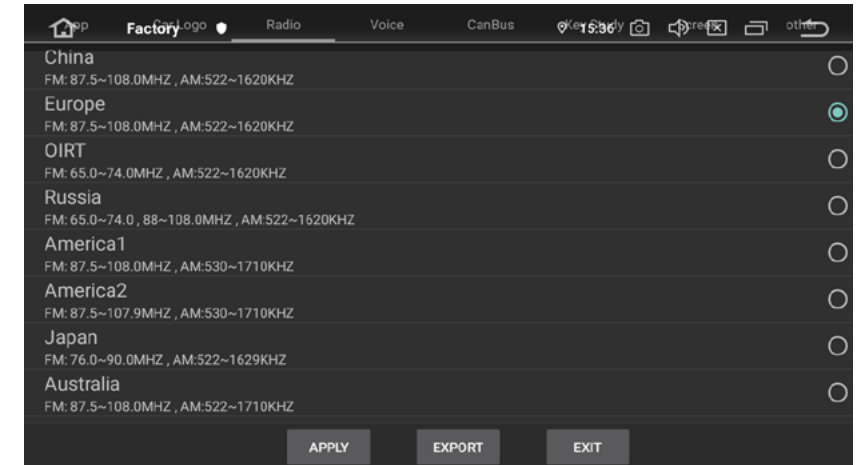


The ASIN of this rear camera has placed in the listing.

System Initial setup

1 Set radio location

The default radio country in the unit is Europe, if you are from other country, you need to access the "factory mode (PW: 126) > Radio" to adjust the country.



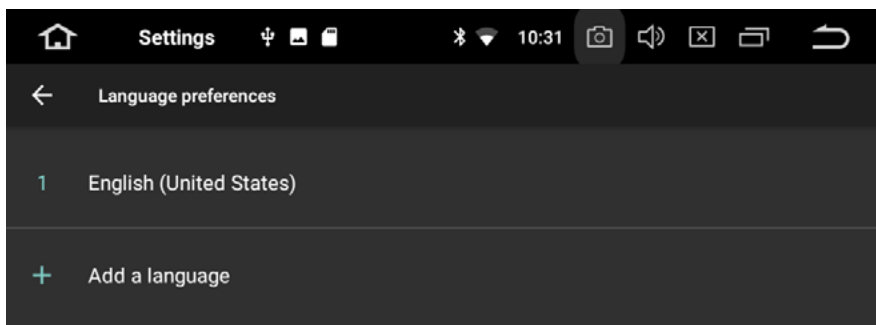
2 Set RDS

The Radio has RDS function but this function is only for Europe, if the clients from other countries use it, it will affect the radio receive, so please close it.



3 Set the unit language

Please go to setting > Languages & input, then you can add the desirable language you need.



About after sales service

Q: Do my head unit has one year maintenance?

A: Definitely yes, you will have our commitment after you purchase.

(The maintenance period will base on the date you make the order)