



## ***Installation manual***



## ***Benz W169 9inch Android***

*Are you ready to install our unit?*

*Let's go >>>*

# 4 steps to install

## STEP 01

Check

- 1) Do the screen is broken ?
- 2) Do the accessories have missing ?

## STEP 02

Test your unit before a full installation.  
(Connect the power cable to your car)

## STEP 03

Do the full installation.

## STEP 04

Test the head unit functions.

## Accessories



- |                                   |                           |
|-----------------------------------|---------------------------|
| 1. Power cable *3                 | 2. RCA cable *3           |
| 3. Radio Antenna Adapter Cable *1 | 4. 15A fuse *1            |
| 5. 3M adhesive *1                 | 6. Canbus *1              |
| 7. USB adapter cable *2           | 8. External Microphone *1 |
| 9. GPS antenna *1                 |                           |

# STEP 02 Test your unit before a full installation.

(Connect the power cable to your car)

1. Double check the size and shape of the center console panel.



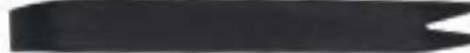
2. Well prepare below tool.



Hexagonal screwdriver

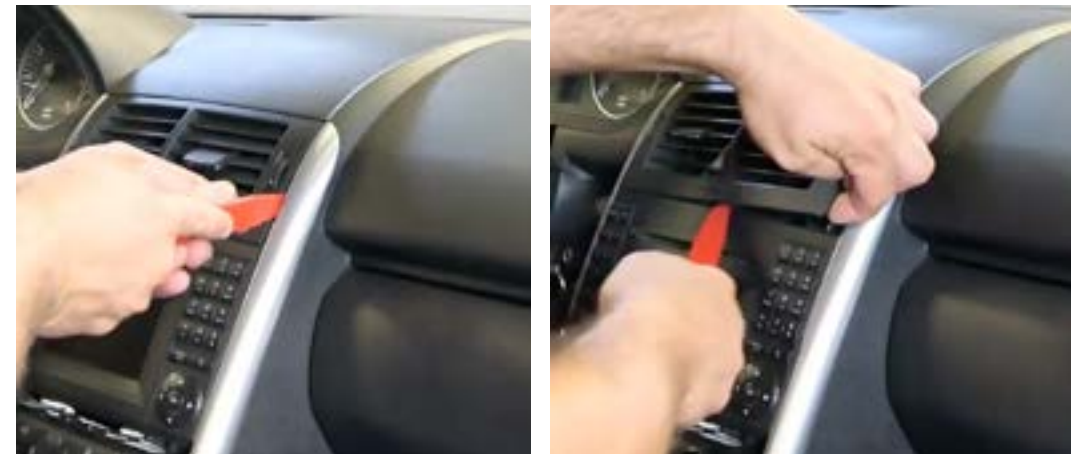
The installation methods among the application models are almost the same, below is the installation guide to show you how to replace the unit to Benz A-class W169.

3. First of all, well prepare the disassembly tool, use it to pry out the bottom surrounding cover of air conditioner.

(10) 



4. Then, pry out the surrounding cover of air vents with the disassembly tool.



5. Now, you can see the bolts at the each corners of old radio. Unsrew the bolts with the hexagonal screwdriver.



6. After that, we can pull out the old radio smoothly.



6

7. Unplug the cable of the old radio.



8. Unplug the cable from the air vent cover.



7

Now you can take out the power cable to connect the head unit and then try to turn it on. If this part is no problem, you can do the remain steps.

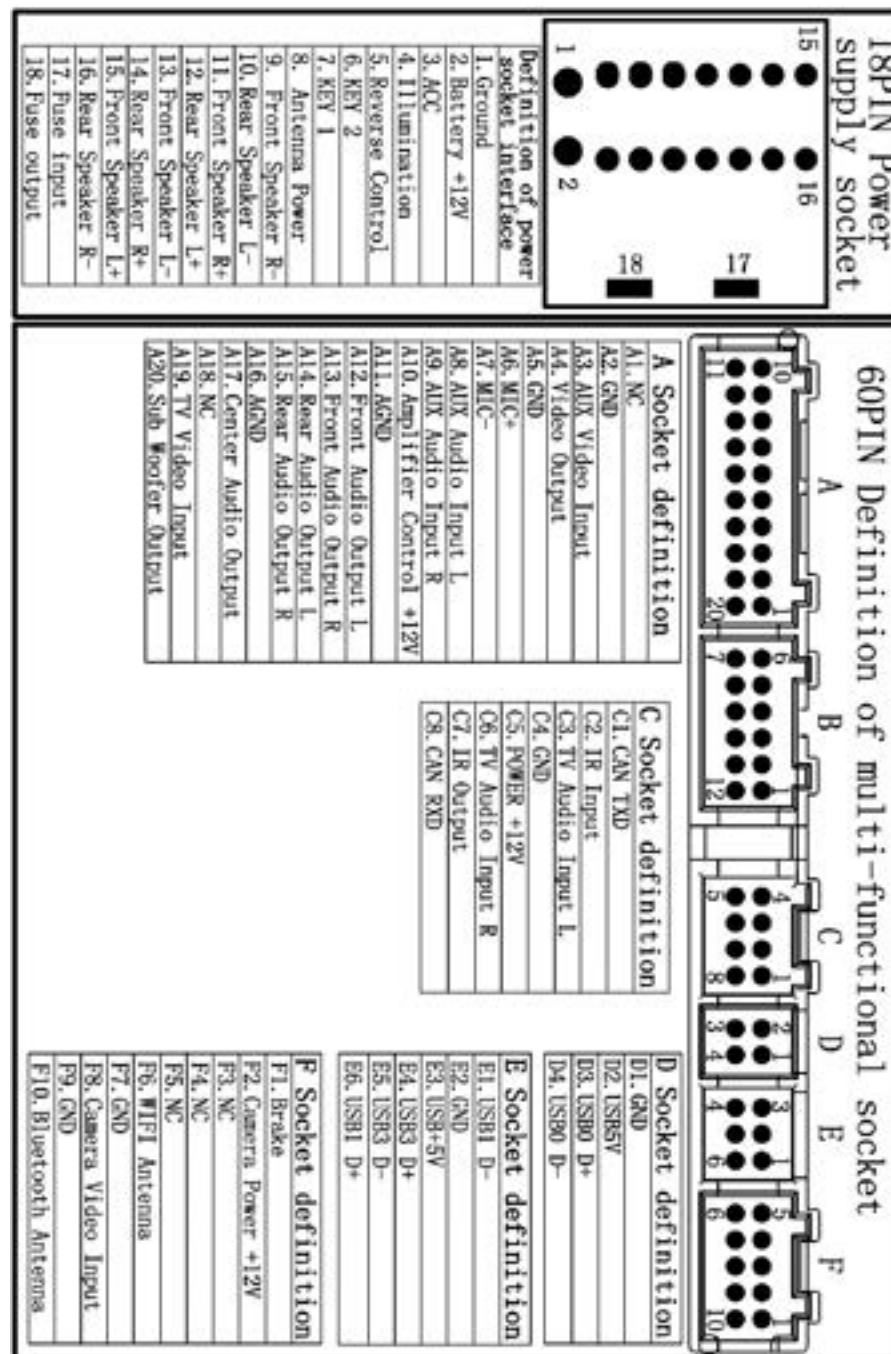
# STEP 03 Do the full installation.

9. Connect those wires provided in the package like Power cable with canbus, USB cable, Radio antenna adapter cable, GPS antenna, Wi-fi antenna and External microphone etc.

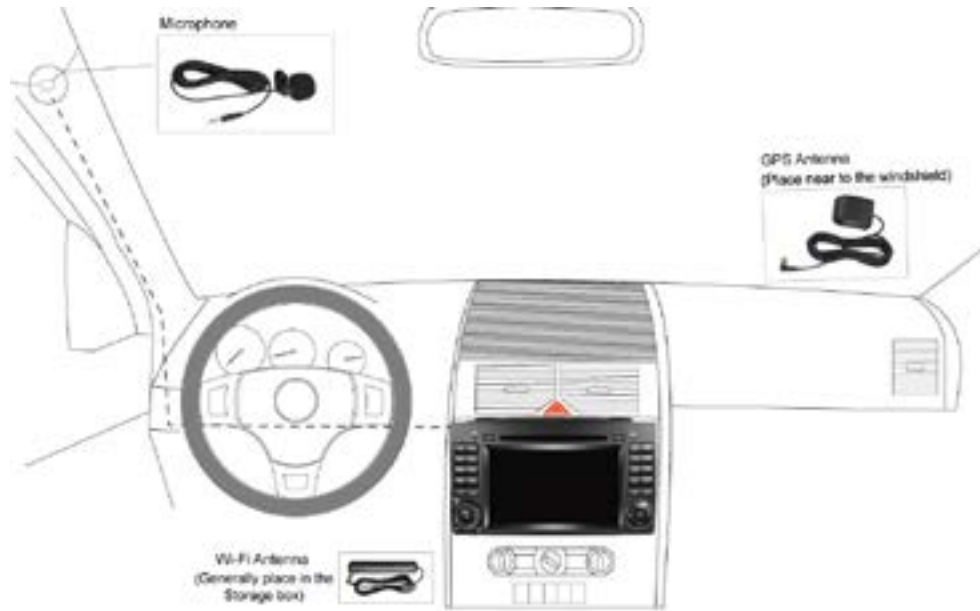
10. Set the canbus number following to the label.



## Wiring diagram



11. Place the GPS antenna and microphone as shown. The wires are hidden in the side of pillar trim and led to the head unit.

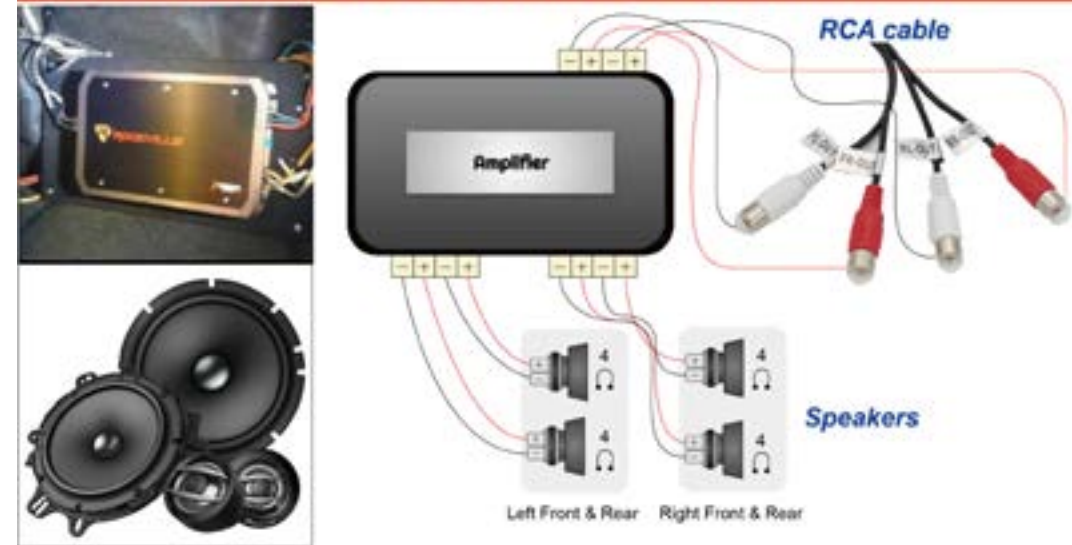


## Wire connection for the amplifier, the subwoofer and the headset monitors

Case 1: Subwoofer connects to the head unit



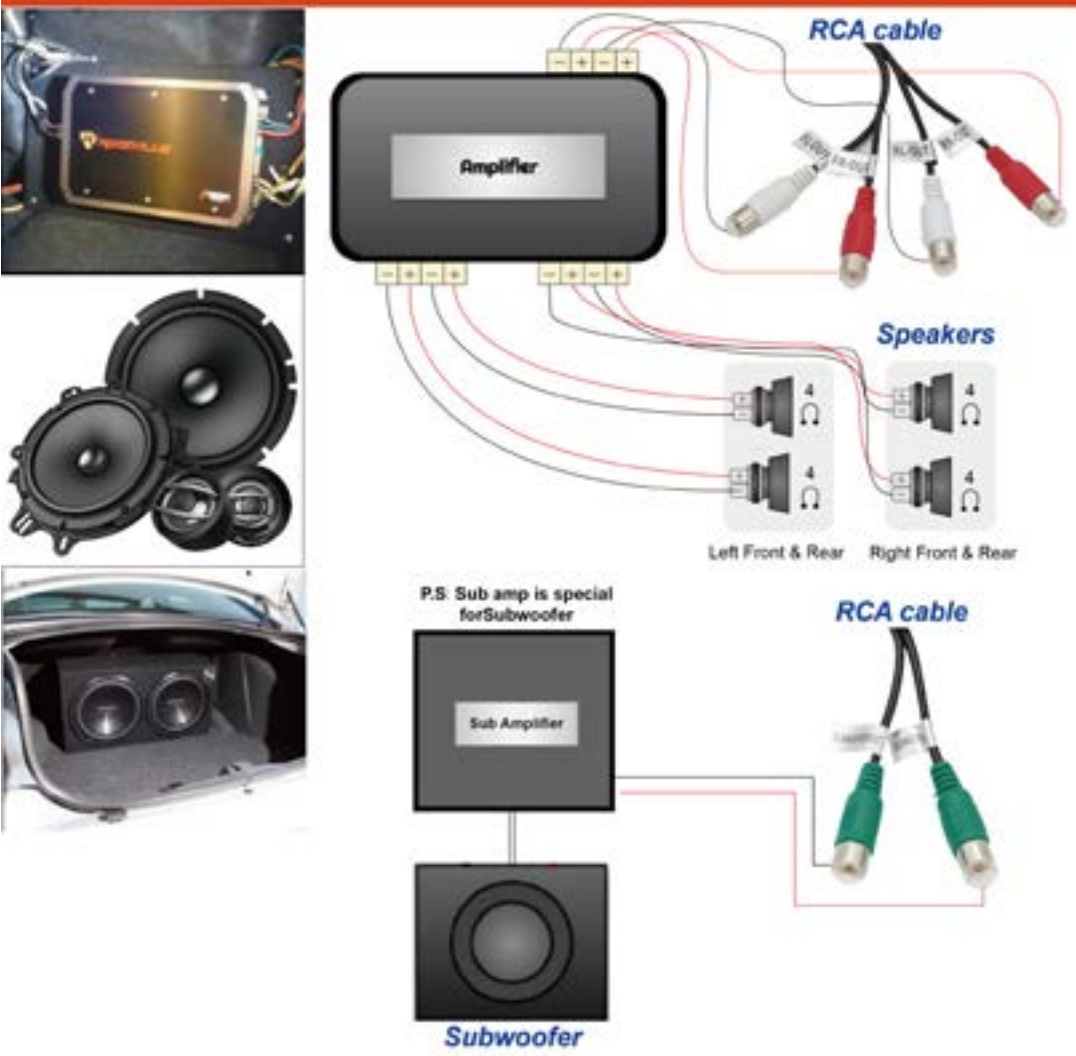
Case 2: The external amp and the speakers are connected to the head unit.



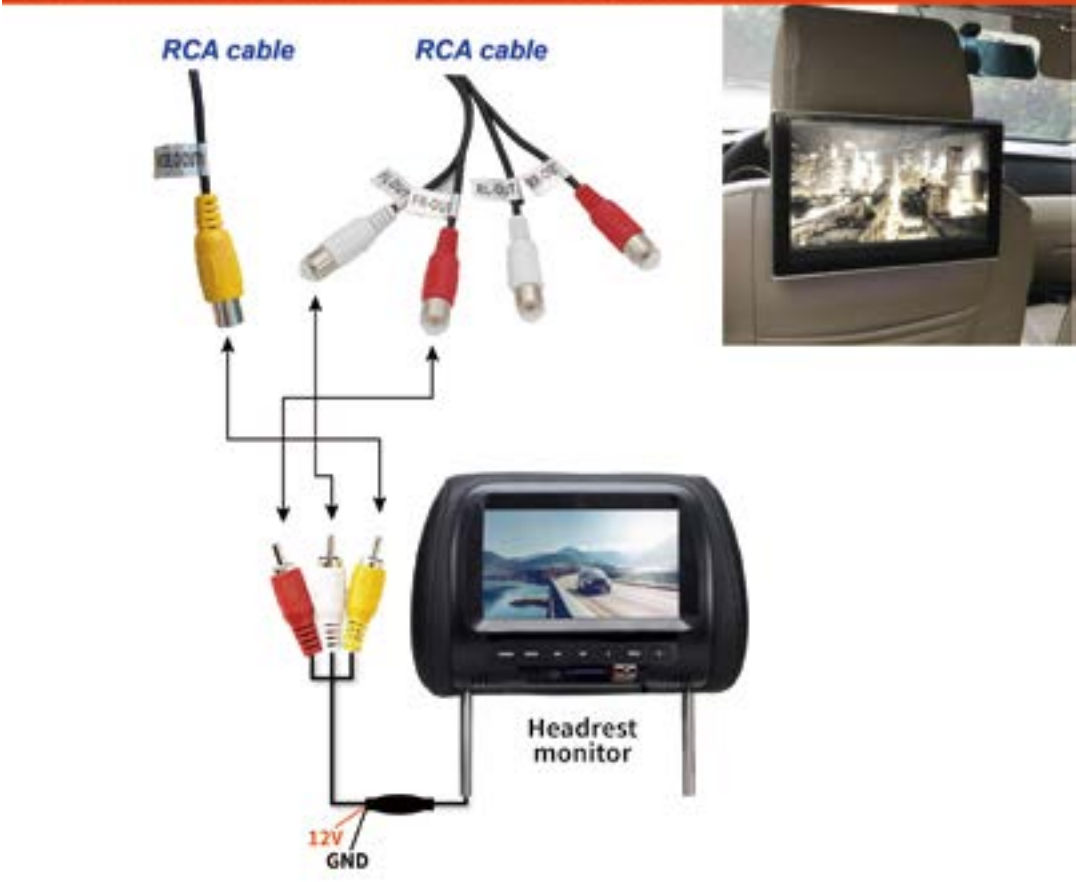
**STEP 04** Test the head unit functions.  
(FM, SD, USB, Bluetooth, reversing, handbrake, headlight, steering wheel control and etc)



Case 3: The external amp + the speakers and the subwoofer both with independent amp are separately connected to the head unit.



Case 4: The headrests monitors are connected to the head unit



Except for connecting the amplifier, the slot of FL, FR, RL, RR also are used for connecting the headrest monitors.

## Optional : Install a rear camera

Below is our rear camera. This will be a reference to teach you how to connect a rear camera to our head unit.



### Cable connection

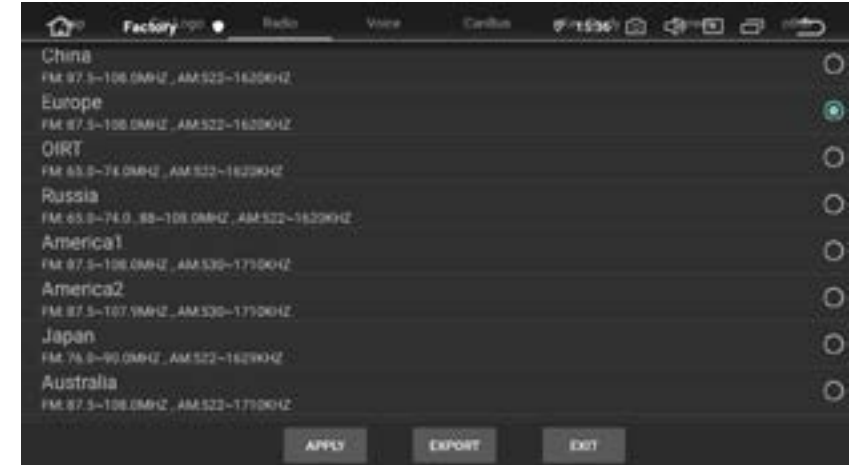


The ASIN of this rear camera has placed in the listing.

## System Initial setup

### 1 Set radio location

The default radio country in the unit is Europe, if you are from other country, you need to access the "factory mode (PW: 126) > Radio" to adjust the country.



### 2 Set RDS

The Radio has RDS function but this function is only for Europe, if the clients from other countries use it, it will affect the radio receive, so please close it.





### 3 Set the unit language

Please go to setting > Languages & input, then you can add the desirable language you need.

