



## ***Installation manual***



## ***Universal 10.1inch Deckless Android (1028)***

*Are you ready to install our unit?*

*Let's go >>>*

# 4 steps to install

## STEP 01

Check

- 1) Do the screen is broken ?
- 2) Do the accessories have missing ?

## STEP 02

Test your unit before a full installation.  
(Connect the power cable to your car)

## STEP 03

Do the full installation.

## STEP 04

Test the head unit functions.

## Accessories



- |                           |                          |
|---------------------------|--------------------------|
| 1. RCA cable * 3          | 2. Power cable * 1       |
| 3. Disassembly tool *1    | 4. Short screws * 8      |
| 5. 15A fuse *1            | 6. USB adapter cable * 2 |
| 7. External Microphone *1 | 8. GPS antenna *1        |

## STEP 02 Test your unit before a full installation. (Connect the power cable to your car)

After you remove the factory radio, you can take out the power cable to connect the head unit and casually connect the screen cable to the screen, then try to turn it on. If this part is no problem, you can do the remain steps.

## STEP 03 Do the full installation.

### 1. Install the screen

- Push the screen into the unit with your hands like (2).
- Hold the clip of cable and lightly put one side to connect the plug of unit and then completely connect.

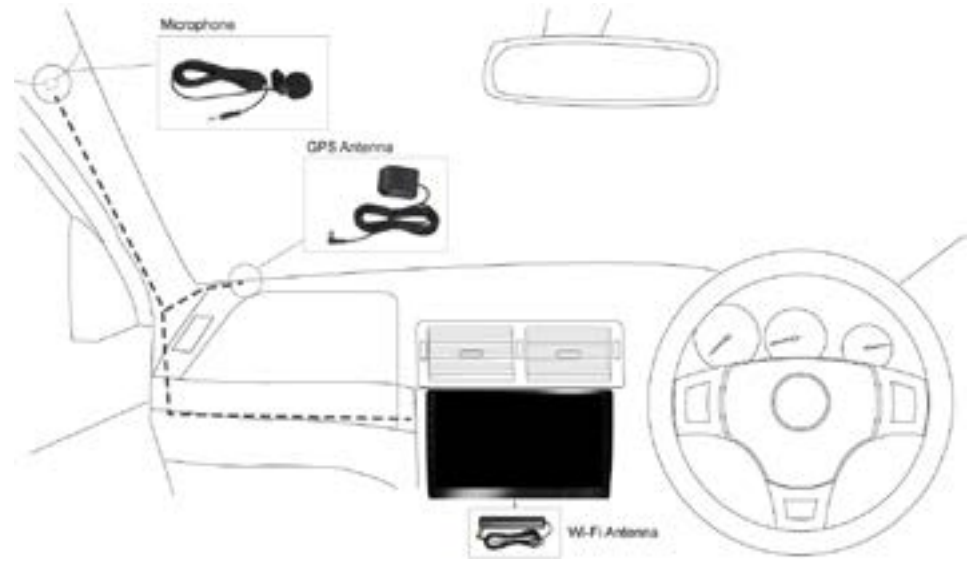
(Please keep the car engine turn off when you do this step)



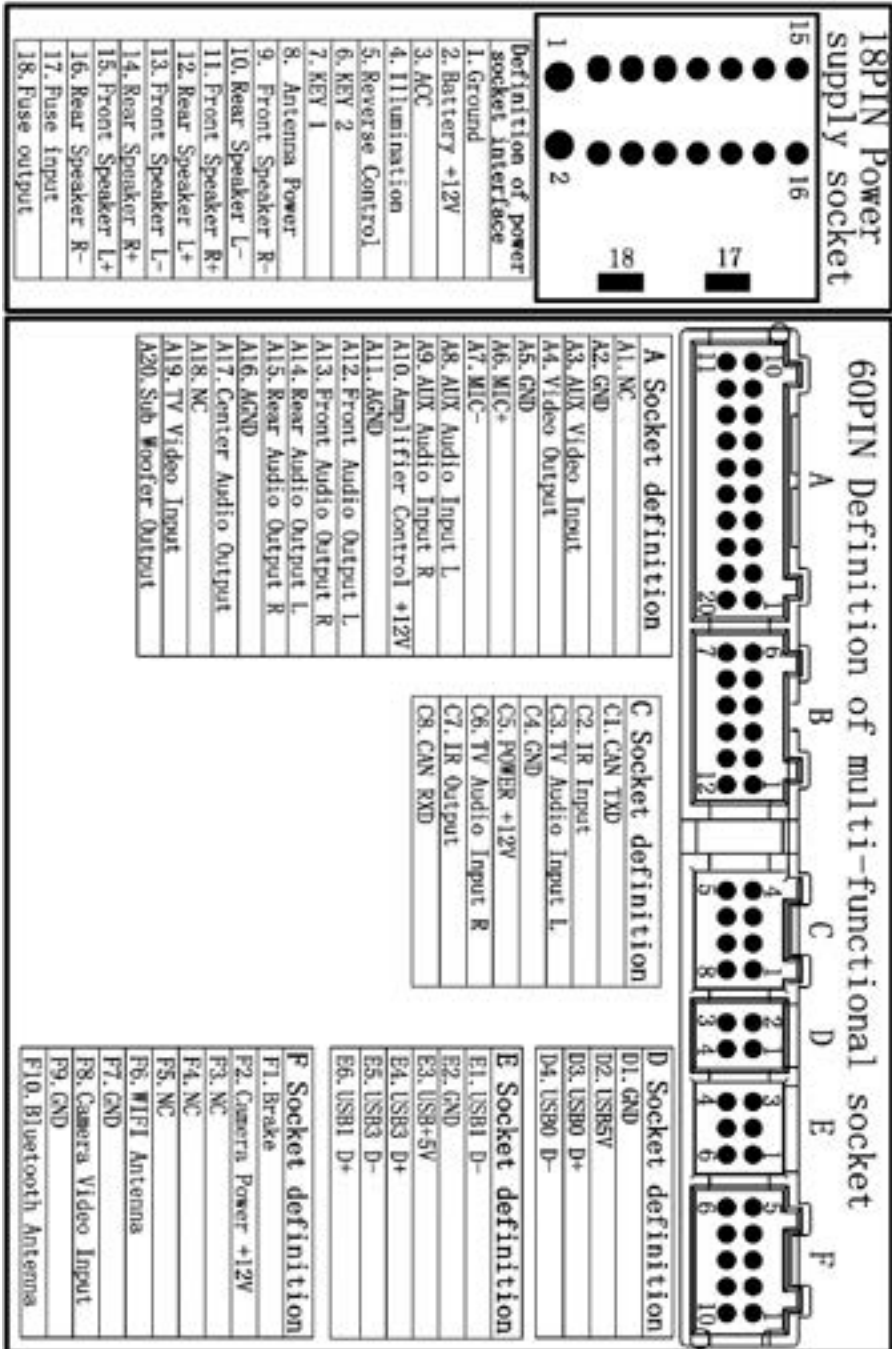
3. Connect those wires provided in the package like Power cable, USB cable, GPS antenna, Wi-fi antenna and External microphone etc.

# Wiring diagram

4. Install the screen and plug the head unit into the center console, then place the GPS antenna and microphone as shown. The wires are hidden in the side of pillar trim and led to the head unit.



**STEP 04** Test the head unit functions. (FM, SD, USB, Bluetooth, reversing, handbrake, headlight and etc)

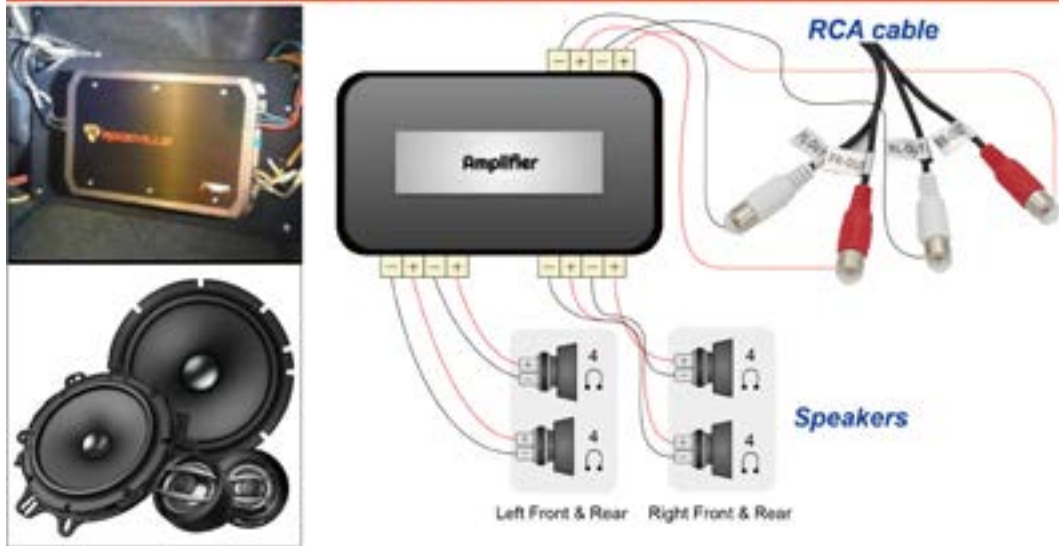


# Wire connection for the amplifier, the subwoofer and the headset monitors

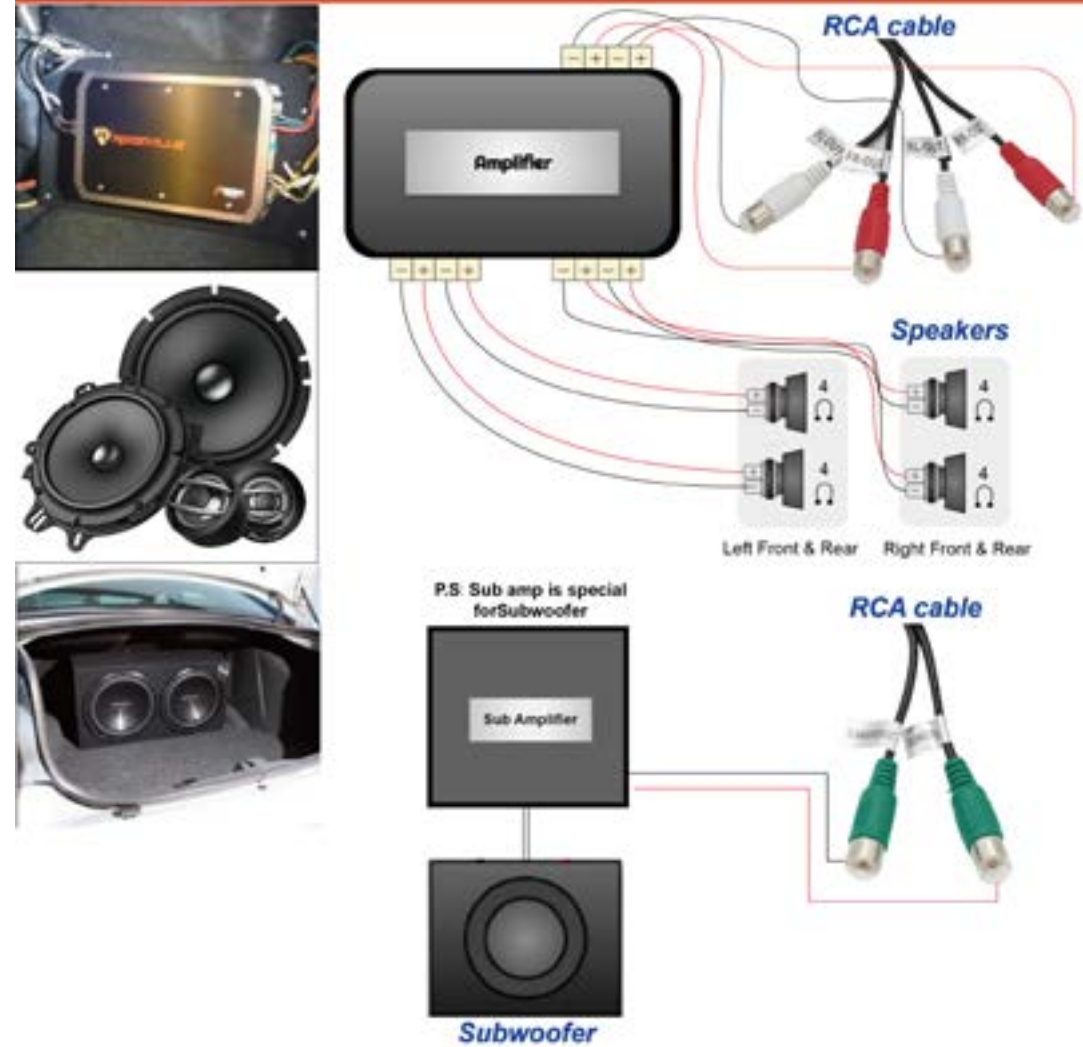
Case 1: Subwoofer connects to the head unit



Case 2: The external amp and the speakers are connected to the head unit.



Case 3: The external amp + the speakers and the subwoofer both with independent amp are separately connected to the head unit.



Case 4: The headrests monitors are connected to the head unit



Except for connecting the amplifier, the slot of FL, FR, RL, RR also are used for connecting the headrest monitors.

## Optional : Install a rear camera

Our main unit only syncs the rear camera but not the front camera.



### Cable connection

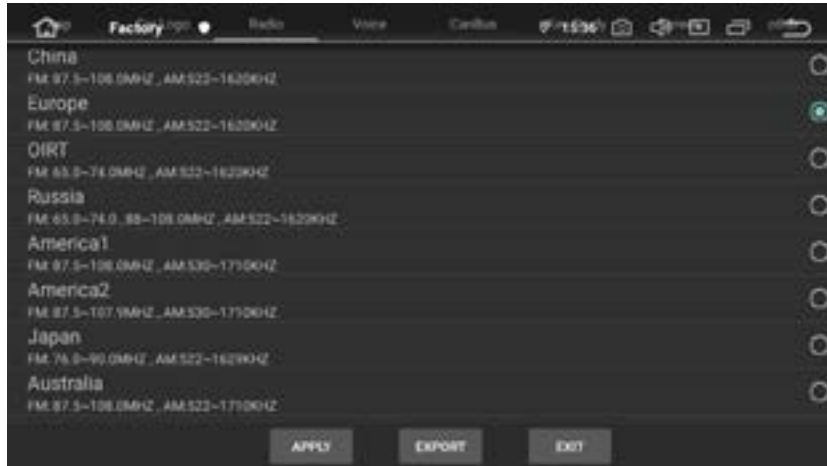


The ASIN of this rear camera has placed in the listing.

# System Initial setup

## 1 Set radio location

The default radio country in the unit is Europe, if you are from other country, you need to access the "factory mode (PW: 126) > Radio" to adjust the country.



## 2 Set RDS

The Radio has RDS function but this function is only for Europe, if the clients from other countries use it, it will affect the radio reception, so please close it.



## 3 Set the unit language

Please go to setting > Languages & input, then you can add the desirable language you need.

